

Protect Houses and Apartments effectively.
Winkhaus Multi-Point Locking Systems for Doors.



in
doors



Greater protection, greater comfort in the home – Winkhaus Multi-Point Locking Systems for doors.

People should feel safe and secure in their own home. Winkhaus door and window technology goes a long way in helping them feel secure. Maximum burglar resistance thanks to innovative fitting technology and intelligent locking systems. Protection from Winkhaus – a good feeling

Intelligent protection

One of the best things which can happen to a building: Protection from Winkhaus multi-point locking systems for doors. Winkhaus supplies tough and reliable locking systems for building entrance and apartment doors of all material types which meet the most demanding of requirements.

Consistent quality builds up trust

Winkhaus is the top specialist in door and window technology – successfully operating for over 150 years. Long-term commitments are characteristic of family-owned companies and clear proof of their reliability.

Contents

Page 04 | 05

Characteristics of Winkhaus products

Page 06 | 07

Multi-point locking system with hooks

Three-point locking system with hooks

Five-point locking system with hooks

Three-point locking system with entry guard

Page 08 | 09

Automatic multi-point locking system

Automatic locking system

Electronic automatic locking system

Page 10 | 11 | 12 | 13

Electronic multi-point locking system

Blue Motion

Blue Top

Page 14 | 15

Multi-point locking system with additional function

Emergency exit and panic door locking system

Fire protection lock

Page 16 | 17

Energy-saving locking system

Bolt locking system

Eccentric roller cam locking system

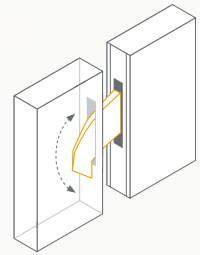
Page 18 | 19

Our service

Page 20 | 21 | 22 | 23

Product overview

No key.
No chance!



When burglars despair, it is often thanks to Winkhaus.

No entry for uninvited guests. The Winkhaus multi-point door locking system lays down the law. No key, no entry. It sounds simple – with Winkhaus, it is.

Easy to handle – comprehensive protection

Winkhaus door locking systems provide effective protection against intrusion for houses, apartments and offices. Winkhaus consistently provides flawless quality and innovative technology. All components are precision worked into an easy-to-use, long-lasting system. Particular hallmarks of Winkhaus products are their superior locking force, smooth locking mechanisms and long-lasting durability. Lock variants with different functions will enable you to customise the door locking system to different needs exactly as required. The type of locking system and number of locking points can be individually chosen. Ease of use of Winkhaus door locking systems ensures protection really is provided.

For private households ...

Winkhaus provides reliable locking and interlocking systems for all apartment entrance doors and house doors, whether they are made of wood, PVCu or metal. Door locking systems can be mechanical, automatic, electronic or fully motor-driven.

... and companies

Winkhaus also supplies secure, cost-effective solutions for complex requirements such as extendable electronic systems for access control and time management. Anti-panic and fire protection locking systems complete Winkhaus' comprehensive range of products for securing public and private buildings.

Multi-point locking system with hooks – steel protection for houses and apartments.

Three-point locking system with hooks

To lock the door, solid steel hooks grip firmly into the frame keep rail. To ensure total protection, the bolts are securely locked into position behind the keep. The door frame and the door leaf are thus interlocked as tightly as possible, ensuring significantly increased resistance to burglary. The locking mechanism is smooth-running and easy to operate.

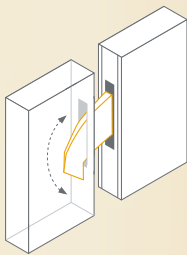
Five-point locking system with hooks

The system's solid protection can be enhanced even further. In addition to the main deadbolt, four hooks help to ward off intruders in this particular Winkhaus model. The optional continuous keep rail ensures maximum strength and is also easy to install. Corrosion-resistant materials and flawless processing guarantee extraordinary strength and long-lasting durability.

Winkhaus Plus

- + Solid hooks with claw action
 - + Chamfered hook shape ensures smooth locking
 - + Suitable for burglary-resistant doors in accordance with DIN EN 1627-30 WK 1 – WK 3, SKG*, SBD (Secured by Design)
-

**Excellent prospects
for your protection.**



Mechanical door locking system with entry guard – just in case.

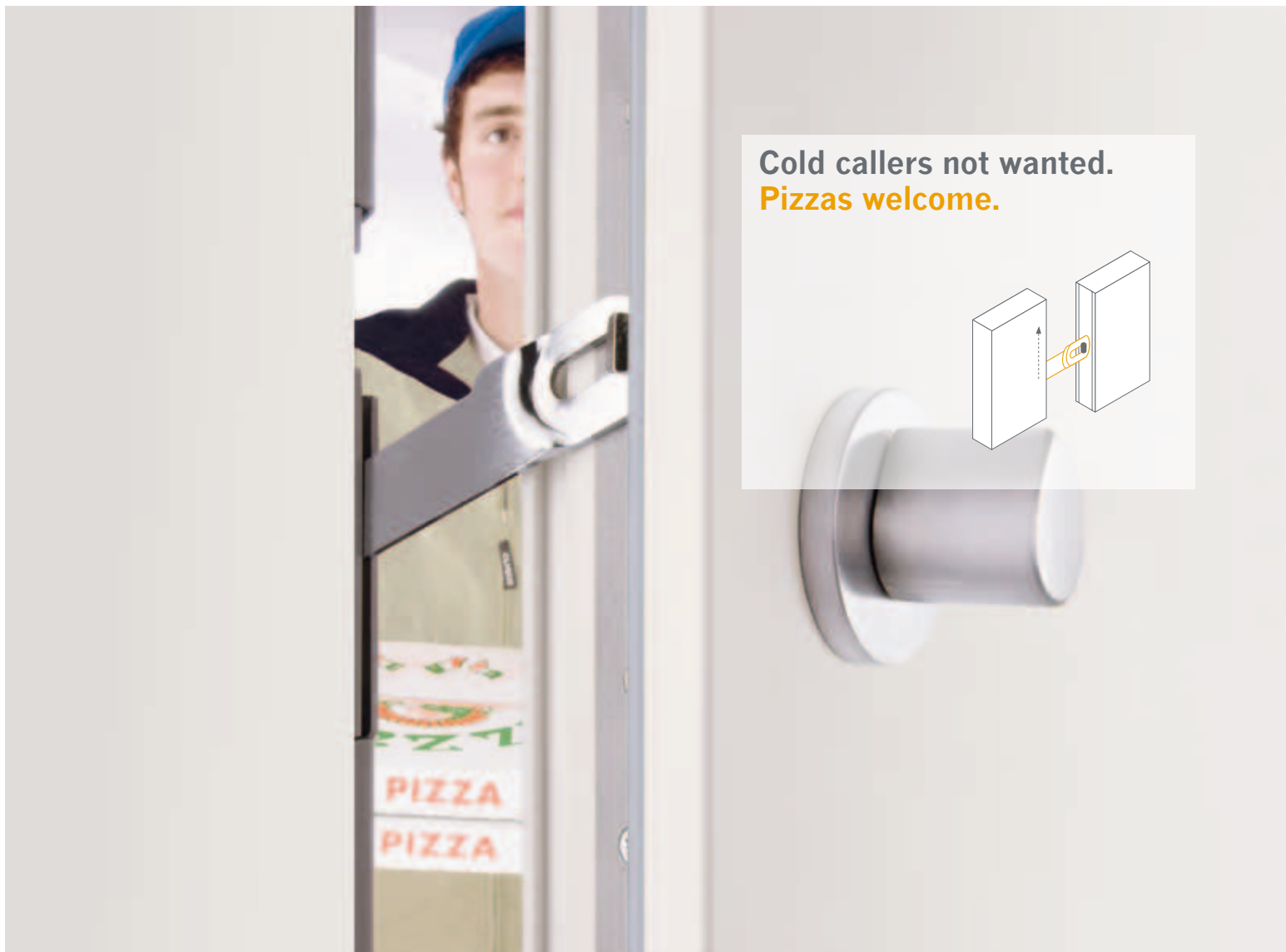
Three-point locking system with entry guard

When somebody calls at the door unexpectedly, it doesn't hurt to be careful. When you glance through the spy glass, you cannot really tell whether a caller is up to no good or not. The Winkhaus entry guard provides security. The door can be opened without the caller gaining entry. It allows you to talk to the caller and, if necessary, turn him away. The design is simple, but effective:

A strong door guard allows the door to be opened just enough to hold a conversation, but not enough for someone to come in. The entry guard's concealed fitting also looks more stylish than old-fashioned door chains. It releases immediately when the key is used to open the door from the outside or when unfastened using the entry guard knob. The entry guard also stops children from running out onto the street when you are not looking.

Winkhaus Plus

- + Only opens a gap, allows visitors to be identified
 - + Concealed fitting with form-closed locking function
 - + Entry guard easily released without having to relock
-



Automatic three-point locking system – self-activating security.

Automatic locking system

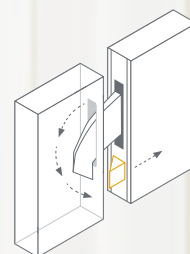
Sometimes when you are leaving home, your mind is already on other things. A good reason to install a Winkhaus automatic locking system. When the door is pulled to, two solid hooks immediately grip into the door frame. The locked door can still be opened – from the inside using the door handle and from the outside using a key. If the profile cylinder is turned through 360°, the main deadbolt is also thrown out and the door handle blocked. The

lock can thus no longer be tampered with. A fail safe system prevents the hooks from being accidentally released before the door is closed. The automatic locking system is suitable for burglary-resistant doors in accordance with DIN EN 1627-30 WK 2, also when used without the main deadbolt. It is also tested in accordance with PAS 23/24 standards and SBD (Secured by Design). The locking system has been certificated VdS Class A (with the main deadbolt).

Winkhaus Plus

- + Automatic locking on closing the door
 - + Effective protection against tampering
 - + Automatic hook blockade
-

Locked.
Automatically.



Electronic three-point locking system – easily opened using remote control.

Electronic automatic locking system

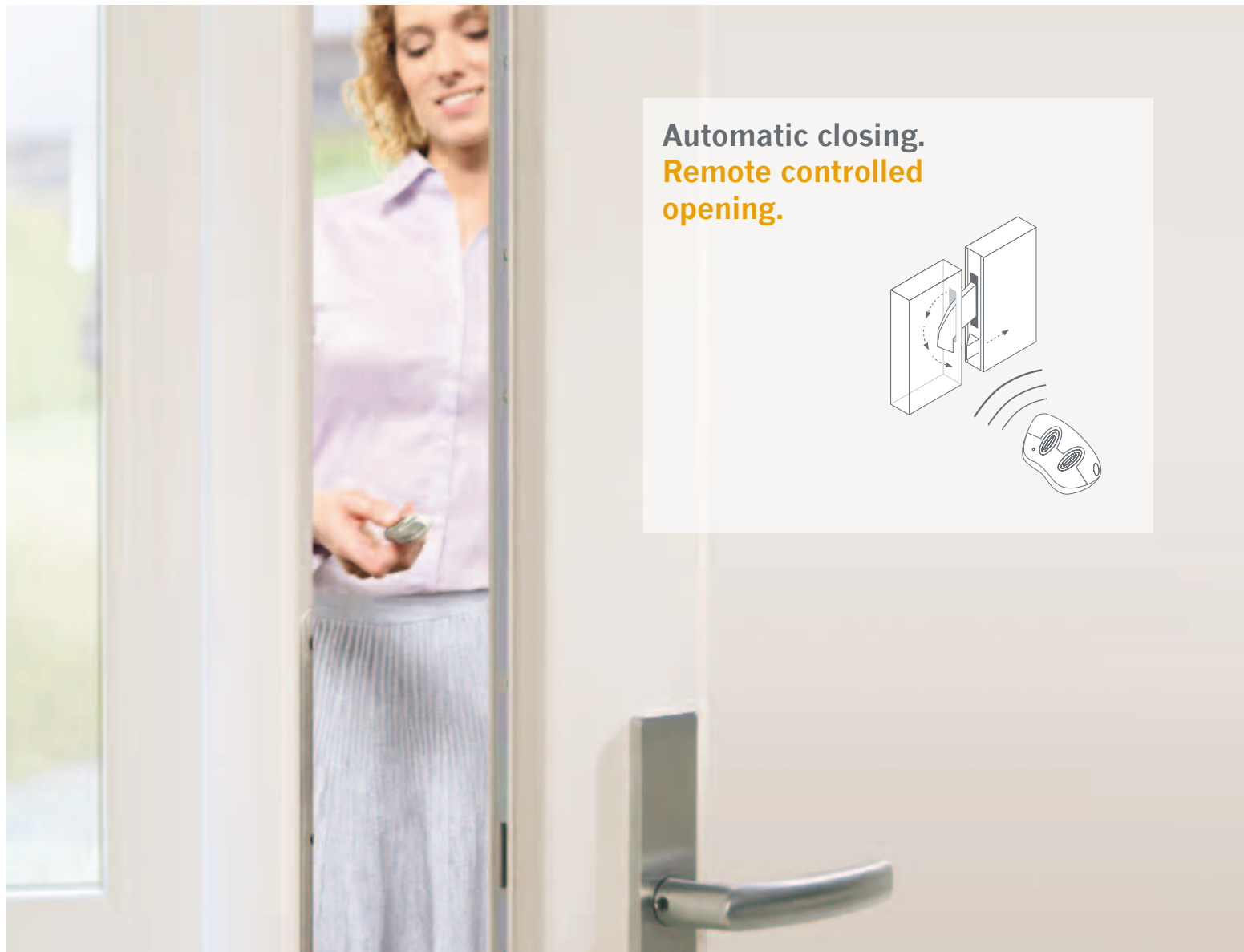
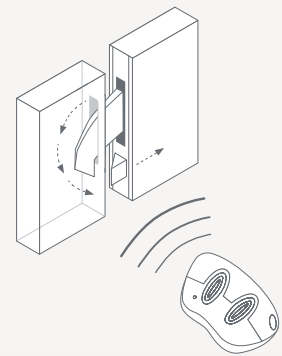
The electronic automatic locking system also enables the solid hooks to mechanically grip into the keep rail as the door is closed – automatically secured. The electronic automatic locking system also offers other conveniences. The locked door can be easily opened by remote control or using the intercom system. The press of a button releases the hooks and latch, allowing immediate access.

It is not only convenient, but also very stylish. The electronic motor component can be retrofitted to an existing Winkhaus automatic locking system. An additional automatic door opener is available as an option. Furthermore it is tested in accordance with PAS 23/24 standards and SBD (Secured by Design). The electronic automatic locking system has also been certificated VdS Class A (with the main deadbolt).

Winkhaus Plus

- + **Optional added motor function, thanks to Winkhaus modular technology**
 - + **Entry door can be unlocked by access control systems with voltage-free contacts**
-

Automatic closing.
Remote controlled opening.





Uncompromising convenience: remote controlled door opening.

Blue Motion – motorised locking and unlocking. Secured by an electric motor, easy to open.

Security can be easy – an electric motor locks the door when the door is closed. No fiddling around with the door key, no need to ask yourself if you remembered to lock the door when out and about. Blue Motion simply offers security.

Blue Motion

Our fully motorised system Blue Motion wins over due to automatic locking and unlocking of its two hooks and main deadbolt – secure and firmly sealed. The door is unlocked using a remote control or another contactless electronic access system. Or in the usual way using a key. It's also quick and easy from the inside – using a button or door handle, or using an intercom. The Blue Motion locking system can also be equipped with a day and night mode. This function is enabled by fitting a rolling latch or an adjustable door

strike with a mechanical or electronic unlocking mechanism. Blue Motion can also be connected to all types of access control systems or existing building automation networks, such as intercom systems, card readers, heating and surveillance systems. Blue Motion is thus not only suitable for entry doors to residential buildings, but also for demanding access control systems in commercial buildings. Winkhaus also offers certified designs with panic systems for such properties in accordance with DIN EN 179 and DIN EN 1125.

Winkhaus Plus

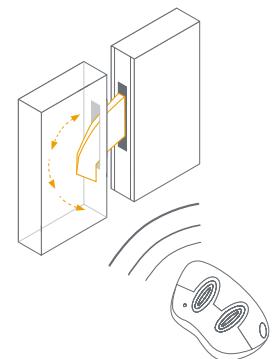
- + Automatic, fully motorised locking and unlocking with powerful closing pressure
 - + Possible to open and close without key
 - + Compatible with different access control and door opener systems
 - + Cable transition can be separated.
 - + Optionally available with panic function
-



Separable cable transition



Hook



Blue Top – motorised locking and unlocking. The perfect frame for complete security.

Highly effective burglary protection, uncompromising design. That is Blue Top, the fully motorised security door locking system with no wiring in the door leaf, no profile cylinder and no door handle set, but a great deal of scope for door leaf design.

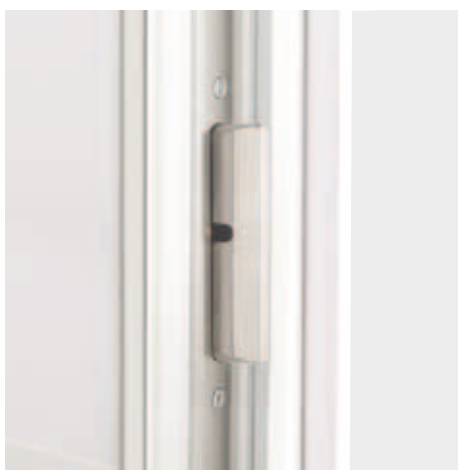
Blue Top

The secret of the Blue Top system – the whole locking mechanism can be completely housed in the solid door frame in wooden doors. The advantage is obvious as there is no need to accommodate heavy locking components in the door leaf. The scope for customised door leaf designs is thus endless. The Blue Top locking system can even be fitted without a profile cylinder and handle set for those who love clean, linear designs. Blue Top can be used for the same system applications as Blue Motion (page 11), except

the panic door function. The system will win you over due to its sophisticated control and numerous convenience functions. For instance, the door is automatically locked by a motor when closed – with two solid 110 mm Blue Top deadbolts. The contactless authorisation system opens the door via remote control or other access control systems. Winkhaus Blue Top is a trendsetting locking system. It provides solid protection against intrusion, a high level of convenience and extensive scope for door design.

Winkhaus Plus

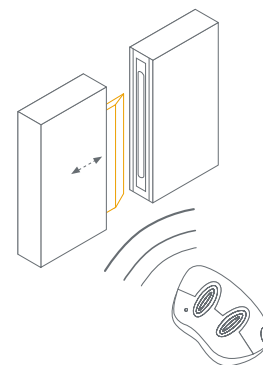
- + Fully motorised locking and unlocking
 - + Greater scope for door leaf design
 - + Aesthetic door design possible without profile cylinder or door handle set
 - + No wiring in door leaf, so easily fitted
 - + Solid 110 mm Blue Top deadbolts
-



Blue Top deadbolts in door frame



Single keep mounted in door leaf

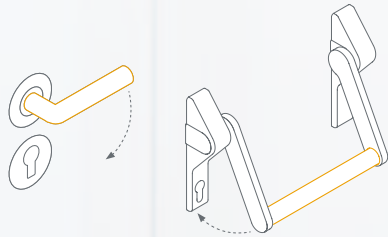




Mechanism in door frame: Blue Top allows aesthetic design without profile cylinder.



Emergency? **Don't panic!**



For emergency exits and fire protection doors – a quick exit!

When it is a case of saving peoples' lives, technology must not fail. Their intelligent, reliable door fitting technology enables Winkhaus to offer protection on both sides – effective burglary protection on the outside, easy to open (panic doors) or reliable door lock (fire protection) on the inside.

Emergency exit and panic door locking system

Locking systems in doors on escape and rescue routes are regulated throughout Europe by the standards DIN EN 179 (emergency exits) and DIN EN 1125 (panic doors). Winkhaus also supplies safe solutions for such requirements. In the event of an emergency, the Winkhaus panic door lock system can be intuitively released by pushing the exit bar.

Fire protection locking system

If a fire breaks out in a building, people's lives are at stake. Main accesses must remain firmly closed, so the fire does not spread to other parts of the building. That way precious time is won for rescue work and valuable property is also protected. Winkhaus tested fire protection multi-point locking systems keep doors firmly closed.

Winkhaus Plus

Panic door locking system

- + Door opened from inside with a single hand movement
- + Emergency locking system: Opened by using handle
- + Compliant with DIN EN 179 tested with handle sets of FSB and Hoppe
- + Panic door locking system: Opened by pressing the handle bar in the direction of escape
- + Compliant with DIN EN 1125 tested with handle bars of FSB

Fire protection locking system

- + General approval by construction supervisory authority for use in 1- and 2-leaf fire and smoke protection doors
 - + Certified by the Institute for Materials Testing NRW
 - + Compliance symbol "Ü" stamped on guard
-

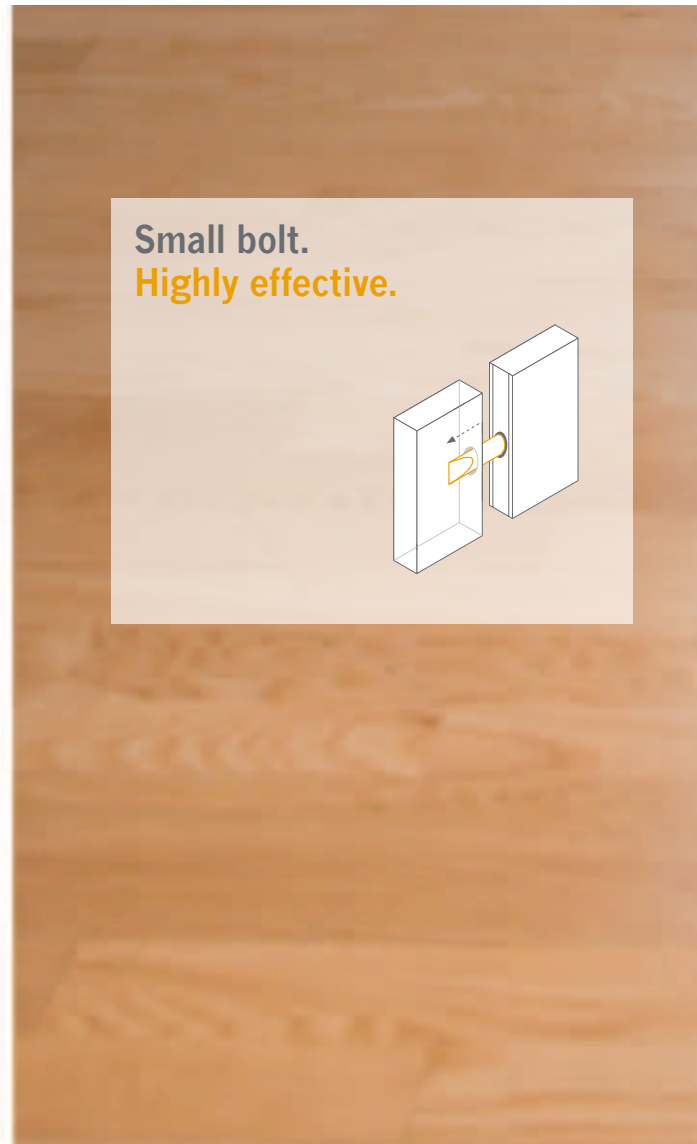
Locked with steel bolts – hermetically sealed.

Bolt locking system

The bolt locking system provides cost-effective intrusion resistance. Solid, forged-steel bolts lock in position when closed and cannot be forced open individually or as a group.

Winkhaus Plus

- + **Hermetically sealed when closed: effective noise and heat insulation**
 - + **Ideal for wooden, PVCu, aluminium and steel frame doors**
 - + **Can be used for left-handed or right-handed doors**
-



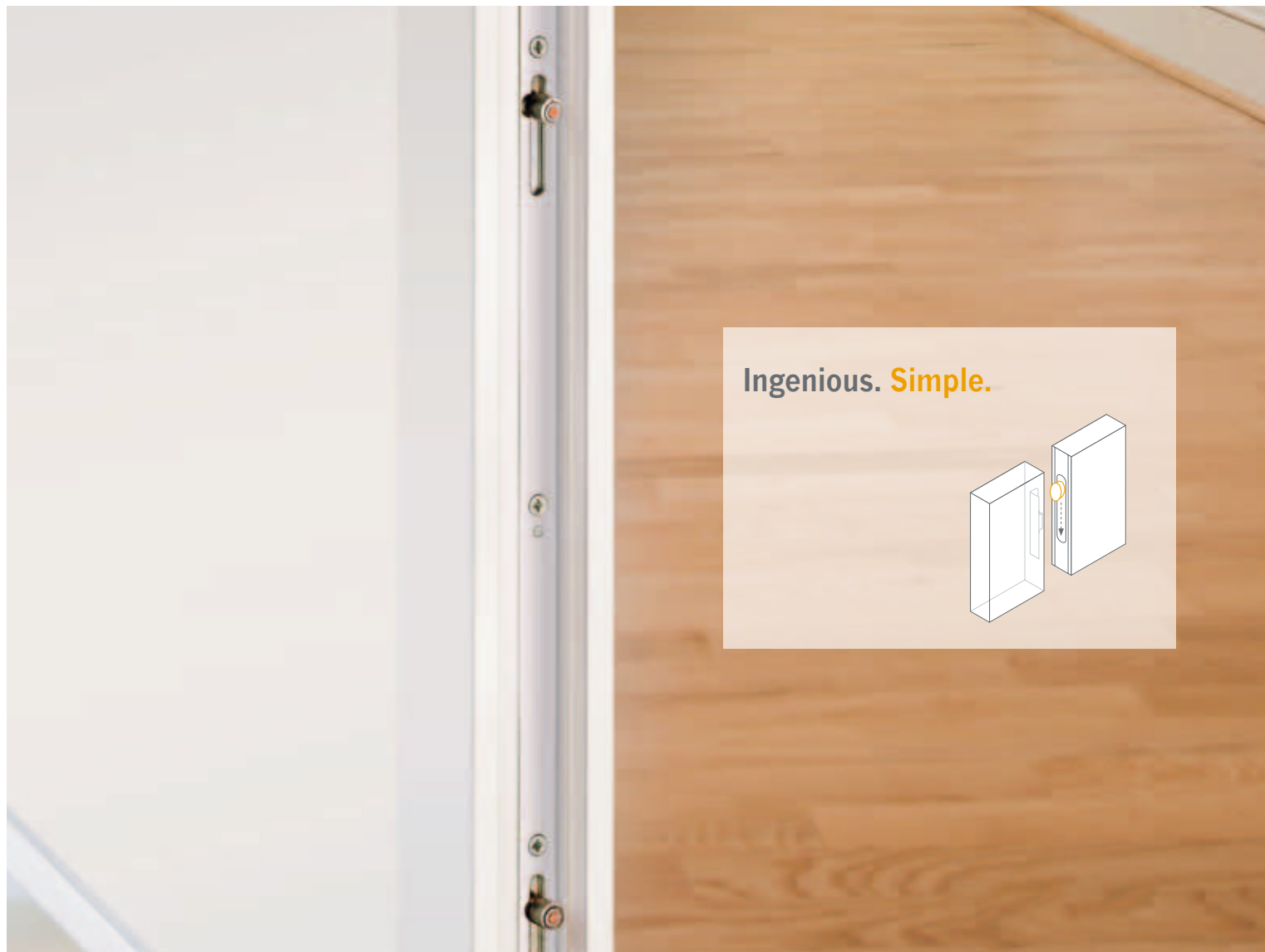
Locking system with eccentric roller cam – simple and effective.

Eccentric roller cam locking system

The economic locking system for main doors and side entrances: The Winkhaus eccentric roller cam. The five-point locking system wins over due to its robust technology. 4 eccentric roller cams used to close the door and a nickel-plated steel main deadbolt provide practicable protection for all types of doors. This purely mechanical locking system is operated via a conventional profile cylinder or a handle.

Winkhaus Plus

- + Closing pressure between door leaf and frame can be optimally set using adjustable eccentric roller cams
 - + For all DIN-compliant handle sets and rosettes
 - + For wooden, aluminium and PVCu door profiles, no need for extra milling
 - + Can be used for left-handed or right-handed doors
-



You can find us and our services near you worldwide.

6 locations in Germany, 10 international sales companies, over 2,400 employees at home and abroad ... We are experiencing continual growth thanks to close contact with our customers and partners. Our capable advisory teams enable us to provide exemplary customer care with personal commitment to customers.

Comprehensive service down to the smallest detail

You would like to secure an apartment, apartment block or another building effectively against intrusion? We are here to help you meet your requirements and overcome any technical difficulties with innovative ideas, special equipment and our comprehensive know-how. You can rely on us even if the project you are planning is unique and somewhat out of the ordinary. We will find a tailored solution for your project together with you. You will also benefit from

our flexibility and punctuality with regard to delivery schedules as we always strive to keep our promises. If you have specific needs, we will provide you with comprehensive support with informative material such as documentation and manuals, system testing, certification, texts for tenders, brochures and much more. Our employees are ready to offer you advice at all times. Because, for us, service is not only the act of a manufacturer supplying customer, but also a relationship between people.



Product overview.

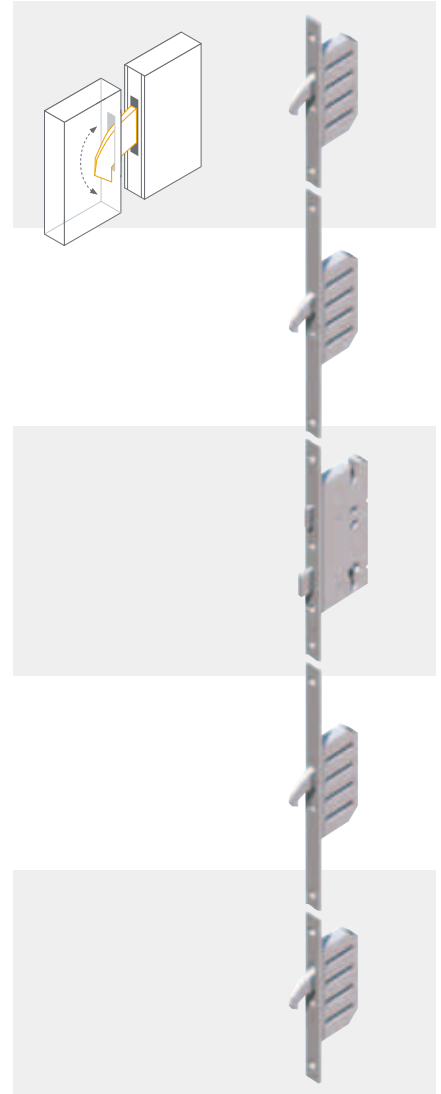
Suitable protection for all requirements

Winkhaus multi-point locking systems for doors are built in modules. You can thus adapt optimum protection exactly to your needs and replace or extend modules at a later date as required. Fitting Winkhaus door locking systems is also very simple – regardless of what the outside door is made of or its type. Winkhaus is an established brand for flexible, upgradable security solutions which provide effective protection. Winkhaus quality – something you can rely on.

Three-point locking system with hooks



Five-point locking system with hooks



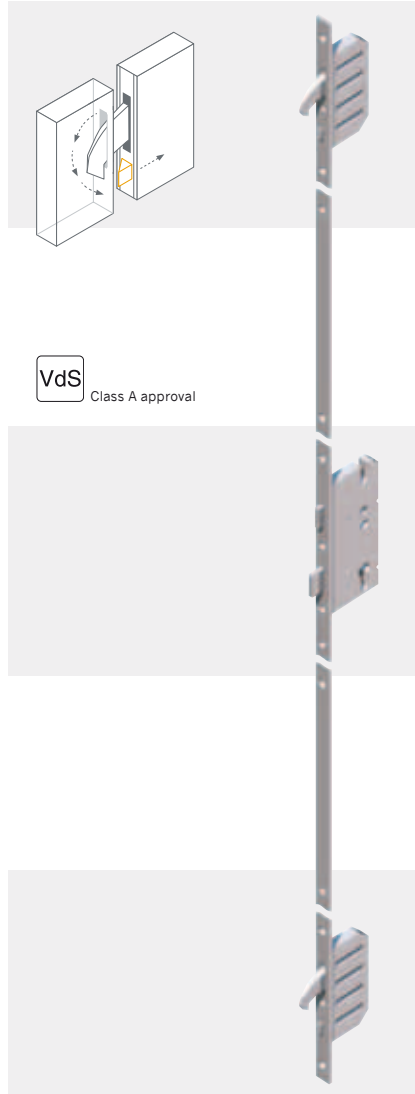
Multi-point locking system
with hooks

- + Solid hooks with claw action
- + Continuous lock rail and frame keep rail (optional)
- + Chamfered hook shape ensures smooth locking
- + Suitable for burglary-resistant doors in accordance with
DIN EN 1627-30 WK 1 – WK 3, SKG*, SBD (Secured by Design)

Three-point locking system with entry guard

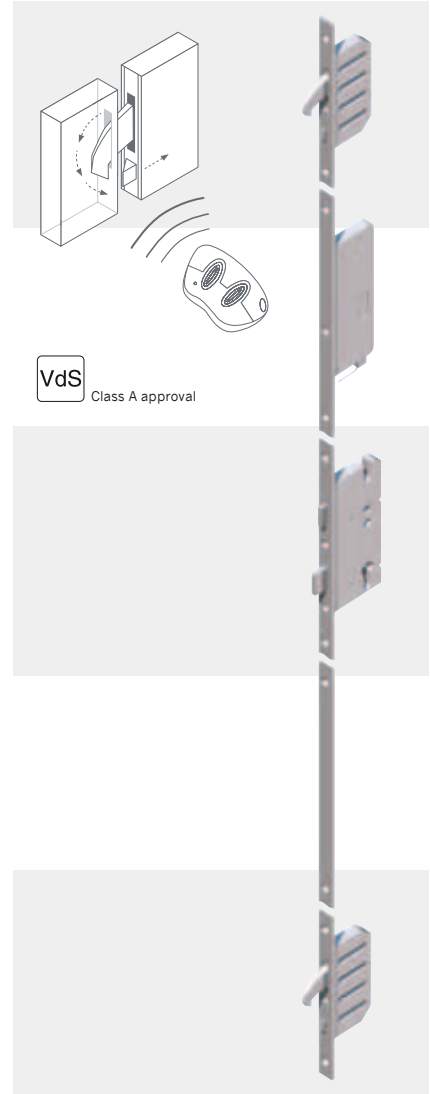


Automatic locking system



VdS
Class A approval

Electronic automatic locking system



VdS
Class A approval

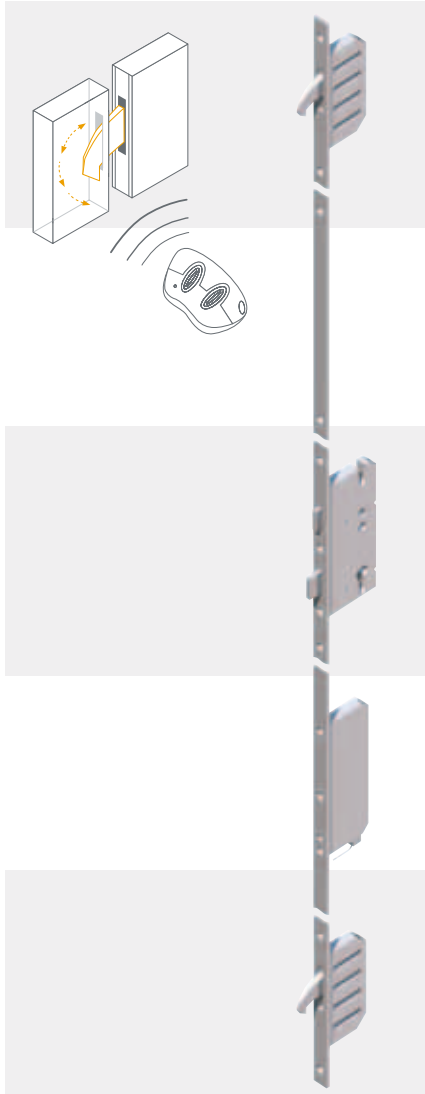
Three-point locking system with entry guard

- + Only opens a gap, allows visitors to be identified
- + Concealed fitting with form-closed locking function
- + Risk of door damage reduced unlike with conventional door chains
- + Immediate release without having to relock

Automatic three-point locking system

- + Effective protection due to automatic locking when door is closed
- + Suitable for burglary-resistant doors in accordance with DIN EN 1627-30 WK 1 – WK 3, SKG*, SBD (Secured by Design)
- + Motor component for electronic automatic locking can be retrofitted
- + Compatible with different access control and door opener systems when locking is done electronically

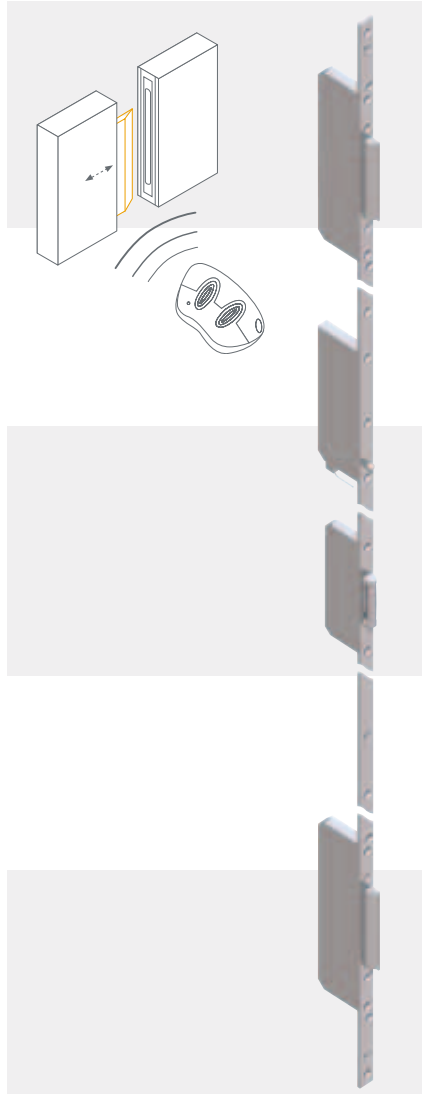
Blue Motion – motorised locking system



Blue Motion – motorised locking system

- + Automatic, fully motorised locking and unlocking with powerful closing pressure
- + Compatible with different access control and door opener systems
- + Cable transition can be separated.
- + Optionally available with panic function

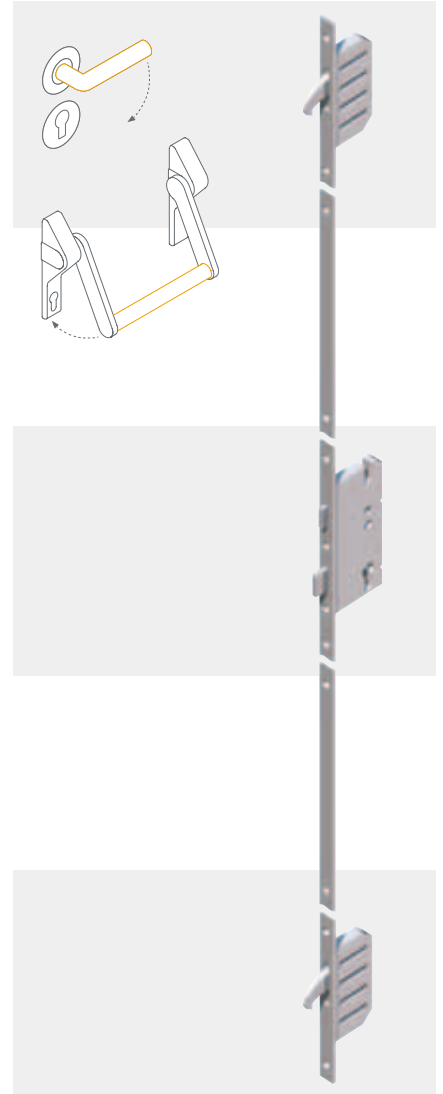
Blue Top – motorised locking system



Blue Top – motorised locking system

- + Fully motorised unlocking and locking after door closing
- + Greater scope for door leaf design due to installation in frame
- + Aesthetic door design possible without profile cylinder or door handle set
- + No wiring in door leaf, so easily fitted

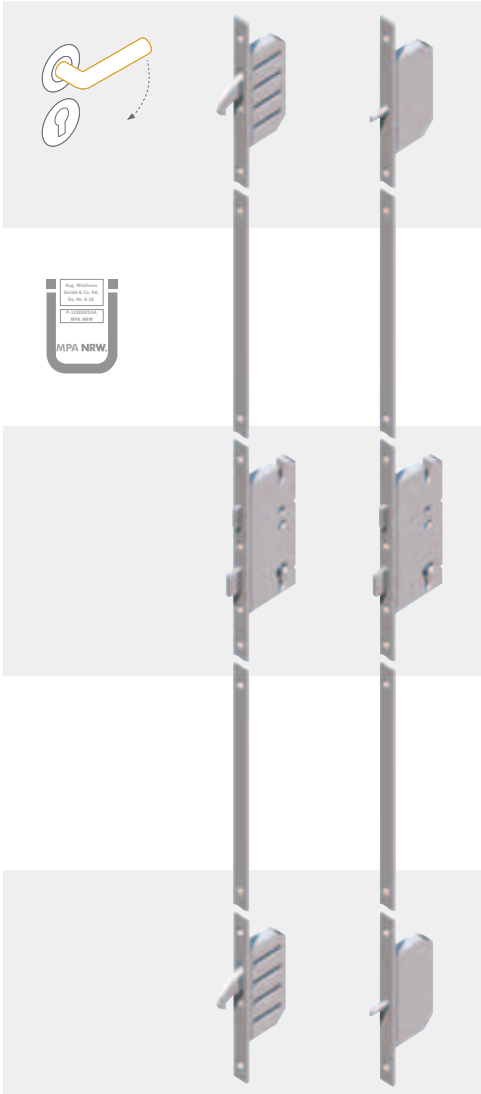
Emergency exit and panic door locking system



Emergency exit and panic door locking system

- + Door opened from inside with a single hand movement
- + Emergency locking system compliant with DIN EN 179 tested with handle sets of FSB and Hoppe
- + Panic door locking system compliant with DIN EN 1125 tested with handle bars of FSB

Fire protection locking system



Fire protection locking system

- + General approval by construction supervisory authority for use in 1- and 2-leaf fire and smoke protection doors
- + Certified by the Institute for Materials Testing NRW
- + Compliance symbol "Ü" stamped on guard
- + Optionally available with panic door function

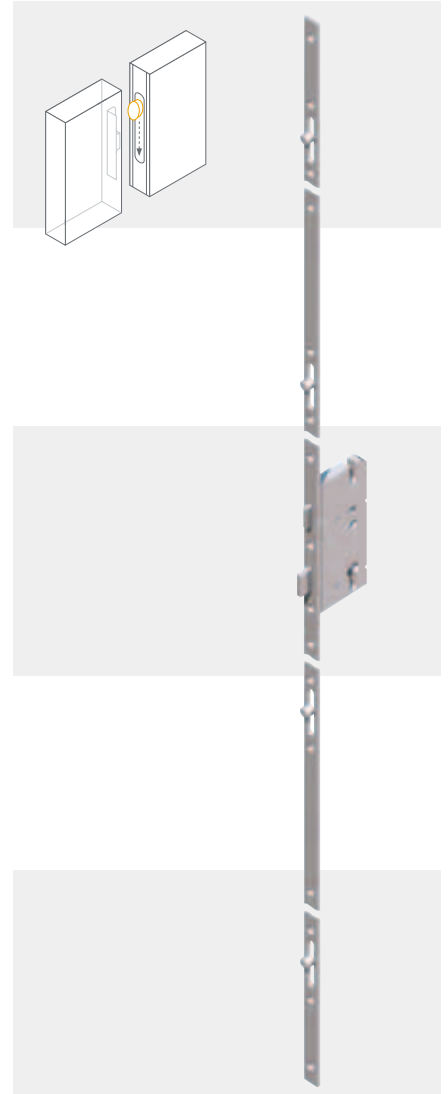
Bolt locking system



Bolt locking system

- + Increased noise and heat insulation
- + Ideal for wooden, PVCu, aluminium and steel frame doors
- + Can be used for left-handed or right-handed doors

Eccentric roller cam locking system



Eccentric roller cam locking system

- + Adjustable eccentric roller cam for optimum closing pressure and tighter sealing
- + For all DIN-compliant handle sets and rosettes
- + For wooden, aluminium and PVCu door profiles, no need for extra milling
- + Can be used for left-handed or right-handed doors

Aug. Winkhaus GmbH & Co. KG

Berkeser Straße 6

D-98617 Meiningen

T + 49 (0) 36 93 - 950 - 0

F + 49 (0) 36 93 - 950 - 134

www.winkhaus.de

tuertechnik@winkhaus.de

